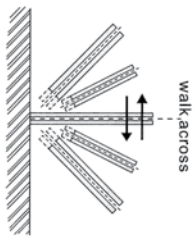


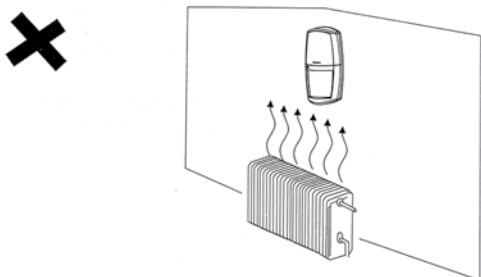
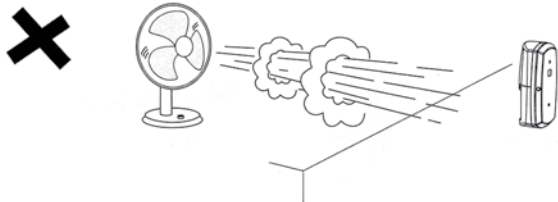


## INSTALLATION



1. The detector should be installed near a door or window to ensure an intruder walks across the detecting range.

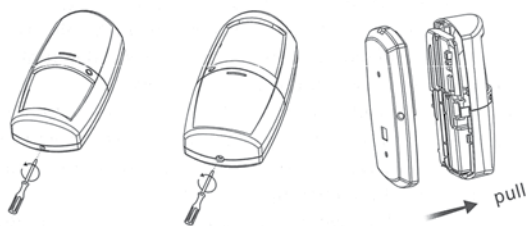
2. Avoid installing the detector in direct sunlight or close to objects that can cause rapid temperature changes, such as heaters, fans, refrigerators and open windows.



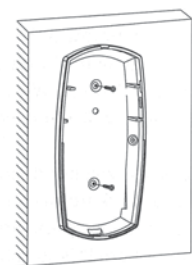
3. Wall mount or use the bracket for easy installation.

## INSTALLATION DIAGRAM

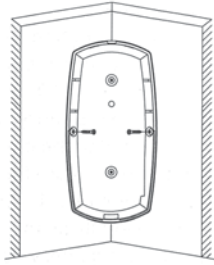
### Wall Mounted



1. Unscrew rear cover plate.

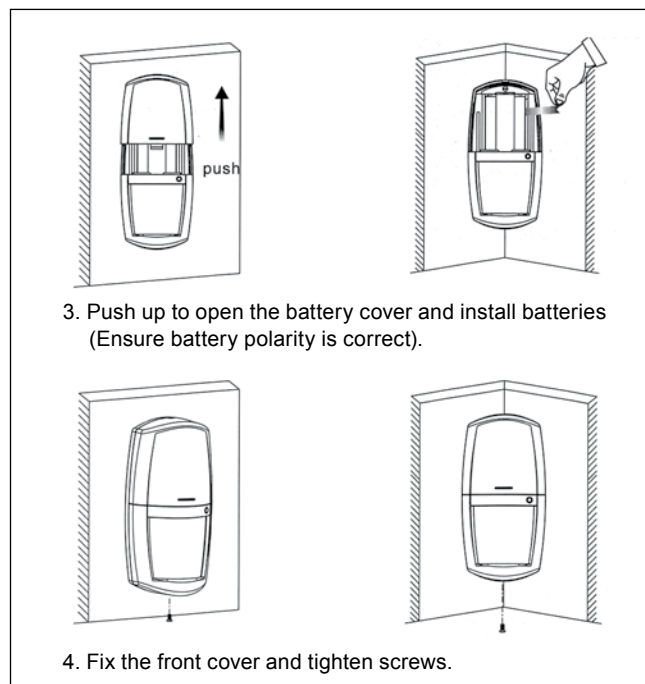


Wall Mounted



Corner Mounted

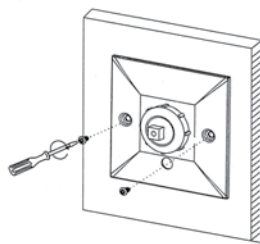
2. Fix rear cover



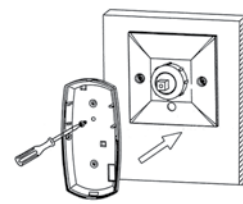
3. Push up to open the battery cover and install batteries (Ensure battery polarity is correct).

4. Fix the front cover and tighten screws.

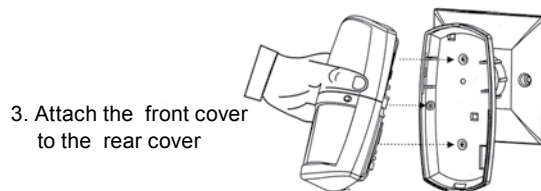
### Bracket Mounted



1. Choose a suitable PIR location and fix the bracket base with the screws provided.



2. Align the rear cover to the ball socket and tighten screws.



3. Attach the front cover to the rear cover

4. Adjust PIR orientation.

